



# Quick Start Guide

For ZWCAD, ZWCAD Mechanical and  
ZWCAD Architecture



ZWCAD Software Co., Ltd.

Add: 32/F, Pearl River Tower, No.15, Zhujiang West Road, Tianhe District, Guangzhou 510623,  
P.R.China  
Tel: +86-20-38289780 Fax: +86-20-38288676  
Email: sales@zsoft.com

[www.zsoft.com](http://www.zsoft.com)

---

Copyright 2008-2018 ZWCAD Software Co., Ltd.  
All rights reserved.

<b>System Requirements</b>	1
<b>Standalone</b>	3
1.1. Standalone Installation	4
1.2. Standalone Activation (Dongle Activation)	6
1.3. Standalone Activation (Soft-Key Activation)	8
1.3.1. Activating automatically (via the internet)	9
1.3.2. Activating manually (no internet is available)	10
1.4. Standalone License Return (soft-key)	12
1.4.1. Returning your license automatically (via the internet)	13
1.4.2. Returning manually (no internet is available)	14
<b>Network</b>	16
2.1. Server Installation	18
2.2. Server Activation	19
2.2.1. Activating automatically (via the internet)	19
2.2.2. Activating manually (no internet is available)	20
2.3. Server Configuration	22
2.4. Starting Licensing	24
2.5. Server License Return	26
2.5.1. Returning your license automatically (via the internet)	27
2.5.2. Returning manually (no internet is available)	28
3.1. Client Installation	31
3.2. Client Activation	32
3.2.1. Requesting a Floating License	33
3.2.2. Borrowing a License	34
3.3. Client License Return	36
3.3.1. Returning a floating license	36
3.3.2. Returning a borrowed license	37

## System Requirements

	Minimum System Requirements	Recommended System Requirements
<b>Operating system</b>	Microsoft® Windows XP SP3 and above Microsoft® Windows 2003 Server Microsoft® Windows 2008 Server Microsoft® Windows Vista Microsoft® Windows 7 Microsoft® Windows 8 Microsoft® Windows 10	Microsoft® Windows XP SP3 and above Microsoft® Windows 2003 Server Microsoft® Windows 2008 Server Microsoft® Windows Vista Microsoft® Windows 7 Microsoft® Windows 8 Microsoft® Windows 10
<b>Processor</b>	Intel® Pentium™ 4 1.5 GHz or equivalent AMD® processor	Intel® Core™2 Duo or AMD® Athlon™ X2 CPU or higher
<b>RAM</b>	1 GB	2 GB or more
<b>Display card</b>	128 MB	1 GB or more
<b>Hard disk</b>	2 GB free space in OS disk, 1 GB free space in installation disk	4 GB free space in OS disk, 2 GB free space in installation disk
<b>Resolution</b>	1024*768 VGA with True Color	1440*900 with NVidia 8 series or Radeon HD series or higher
<b>Pointing device</b>	Mouse, trackball, or other devices	Mouse, trackball, or other devices
<b>DVD ROM</b>	Any speed (for installation only)	Any speed (for installation only)

# Overview

There are two licensing options for ZWCAD.

For standalone licensing, you need to activate each computer with an individual license.  
For network licensing, you need to activate the server computer, then distribute licenses to the client computers via a network connection.



If you plan to install your current ZWCAD onto another computer or have to do it because of a software or hardware change, e.g. replacing hardware in an existing computer, or when reformatting a system hard drive, you need to return your license(s). Refer to the Return procedure.

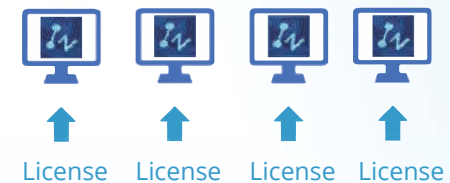
Conventions used in this guide:

- **Bold** characters refer to on-screen clickable contents, such as a name of a button.
- *Italic* characters refer to proper names involved in these procedures.
- **NOTE** refers to explanatory notes, usually with an asterisk (\*) indicating the corresponding

# Standalone

Standalone licenses are ideal for small offices and dedicated production users, because it does not require a network connection.

Refer to the following chapters if you have purchased a standalone license.



## 1.1. Standalone Installation

It will start automatically once the CD is inserted.

Follow the steps shown below

1. Choose 32 bit or 64 bit version that fits your operating system.
2. Tick the checkbox of **ZWCAD 2018**.
3. Untick the checkbox of **Network License Manager**.
4. Specify the installation location.
5. Tick to accept **End User License Agreement**.
6. Click the **Install** button.
7. The installation will start and you will be taken to the finish page. Choose your favorite user interface Ribbon/Classic.
8. Tick the checkbox of **Launch ZWCAD after installed**.
9. Click **Finish** button when done.

10. It's recommended to restart your computer. You have already installed ZWCAD. There are just a few more steps to activate it.

Refer to *Standalone Activation* for details.



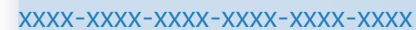
## Soft-Key Activation and Dongle Activation

For standalone licensing, there are two ways to activate ZWCAD.



### Dongle Activation

Dongle activation comes with a dongle and an 8-character license code.



### Soft-Key Activation

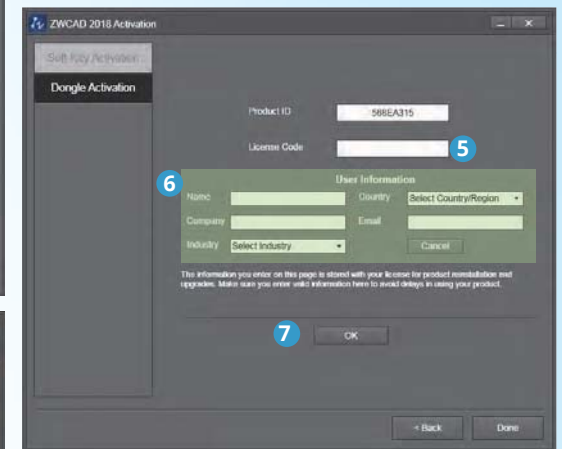
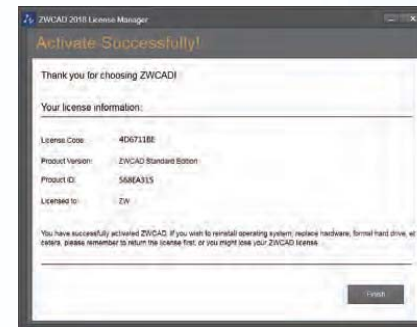
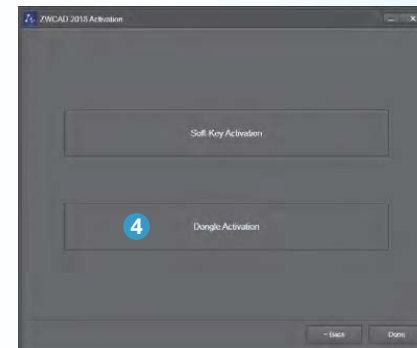
Soft-key activation uses a 24-character license code to activate.

## 1.2. Standalone Activation (Dongle Activation)

If you have purchased a dongle license, please refer to the following steps to activate ZWCAD.

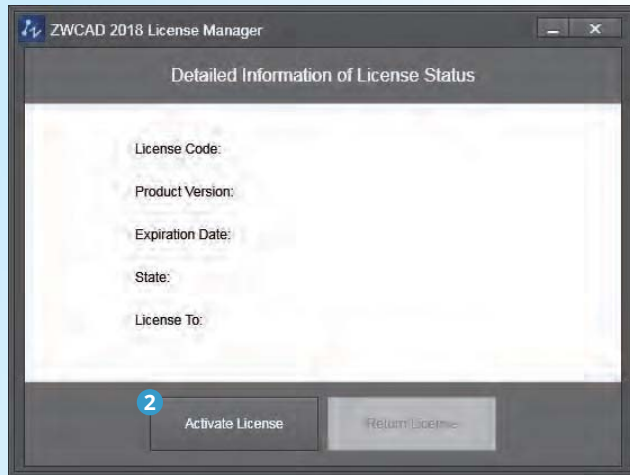
1. Plug the dongle in to your computer after installing ZWCAD, wait until the light on the dongle stops blinking.
2. Launch **ZWCAD License Manager** from the Windows Start Menu.
3. Click **Activate License** on the screen.
4. Click **Dongle Activation**.
5. You will find a number shown in the Product ID field. Input the corresponding license code into the License Code field.
6. Fill in the required user information.
7. Click **OK** when done. You'll see a success page with your license information.

To transfer the license to another computer, please remove the dongle from the current computer and repeat the above steps on the desired computer.



## 1.3. Standalone Activation (Soft-Key Activation)

Refer to this chapter for activation if you purchased a soft-key license.



8

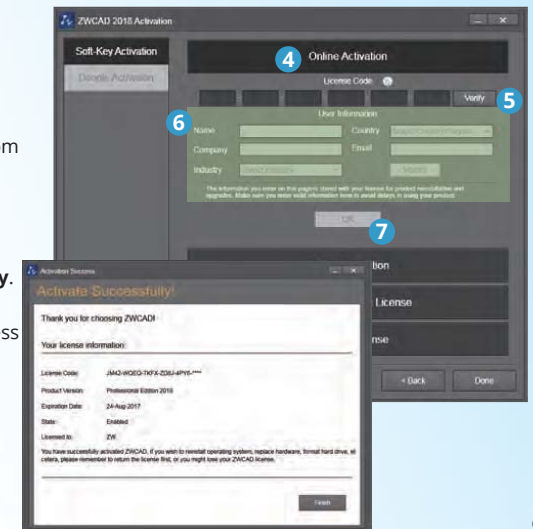
There are two methods for you to activate ZWCAD depending on your internet connectivity. (Except if you purchased a dongle\*). Choose one of the two methods below.

### 1.3.1. Activating automatically (via the internet)

If your ZWCAD came with a license code consisting of 24 characters, you need to use this to activate your ZWCAD.

Follow instructions below

1. Launch the *ZWCAD License Manager* from the Windows Start Menu.
2. Click **Activate License** on the screen.
3. Click **Soft-Key Activation**.
4. Click **Online Activation**.
5. Fill in your license code and click **Verify**.
6. Fill in the required user information.
7. Click **OK** when done. You'll see a success page with your license information.



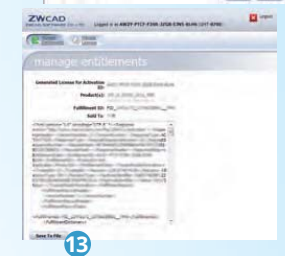
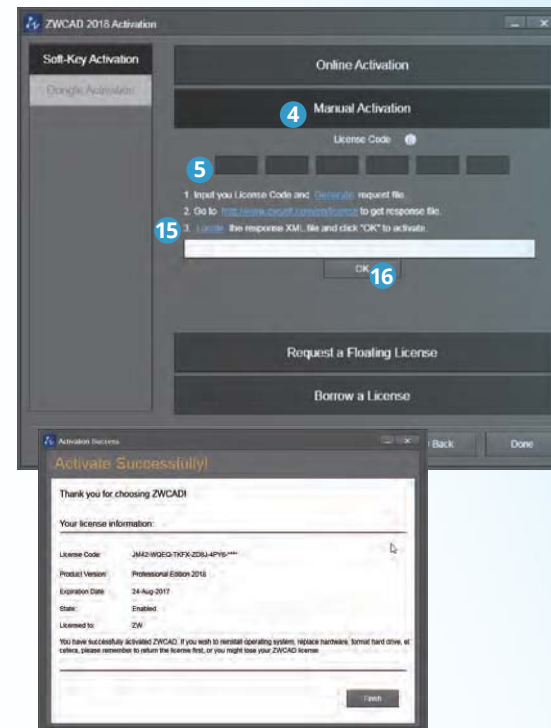
9

### 1.3.2. Activating manually (no internet is available)

If your ZWCAD came with a license code consisting of 24 characters, you need to use this to activate your ZWCAD.

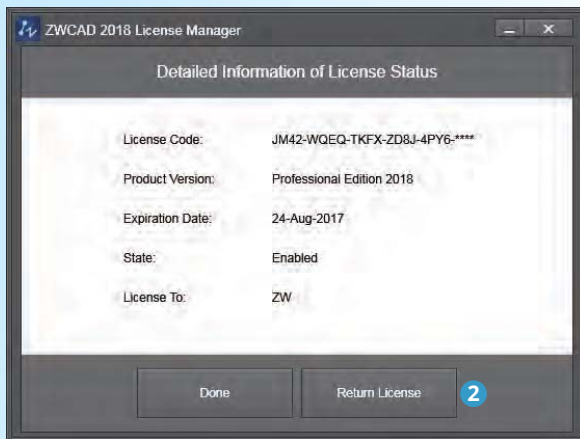
Follow instructions below

1. Launch the *ZWCAD License Manager* from the Windows Start Menu,
2. Click **Activate License** on the screen.
3. Click **Soft-Key Activation**.
4. Choose **Manual Activation**.
5. Fill in your license code.
6. Click **Generate** to save an activation request file (an .xml file named after your license code).
7. Take the activation request file to another computer connected to the internet.
8. Open the web browser and go to [www.zwsoft.com/en/license](http://www.zwsoft.com/en/license).
9. Fill in your license code and the required user information.
10. Click **Submit** and you will be navigated to a page called Manage Entitlements.
11. Click **Manual Activation** on the page.
12. Upload your request XML file and click **Submit**.
13. Click **Save To File** on the coming page and save the file as responseXML.
14. Take this responseXML back to the computer with ZWCAD installed.
15. Go to the page you generated the activation request file and click **Locate** to upload the responseXML.
16. Click **OK** when done. You'll see a success page with your license information.



## 1.4. Standalone License Return (Soft-Key)

You must return your license before transferring it to another computer.



**NOTE:** To ensure that your license remains functional, it is important to return the license before making the following changes: change the hard drive, format the hard drive, reinstall the operating system. If you cannot perform the *RETURN* procedure due to an unexpected software crash or hardware failure, you need to contact the local dealer from whom you purchased your software license(s).

If your ZWCAD is now working normally, a planned reinstallation is to be fully controlled and operated by yourself. Just follow instructions below to complete the whole procedure.

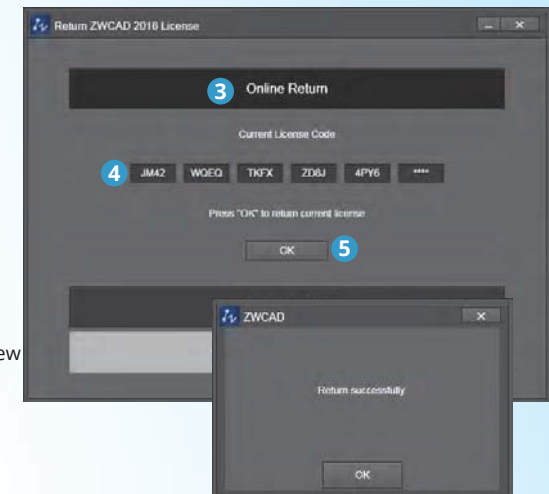
Choose one of the two methods below.

### 1.4.1. Returning your license automatically (via the internet)

Follow instructions below

1. Launch the *ZWCAD License Manager* from the Windows Start Menu.
2. Click **Return License** on the screen.
3. Click **Online Return**.
4. Review your license code shown on the page.
5. Click **OK** to confirm. You'll see a success message.

Your ZWCAD has been deactivated. Now it's ready to be activated on the new system.



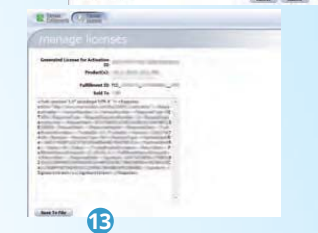
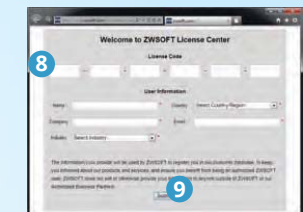
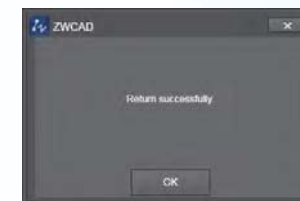
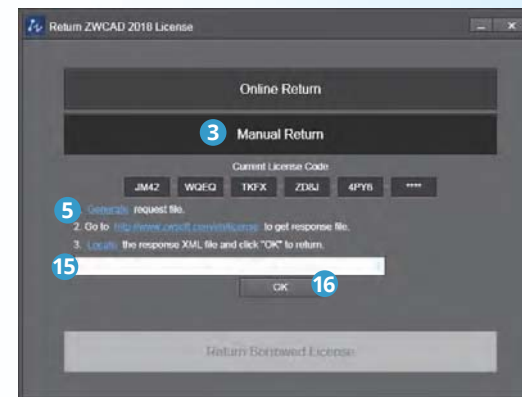
#### 1.4.2. Returning manually (no internet is available)

Follow instructions below

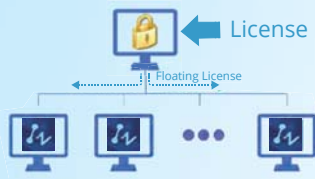
1. Launch the *ZWCAD License Manager* from the Windows Start Menu.
2. Click **Return License** on the screen.
3. Click **Manual Return**.
4. Review your license code shown on the page.
5. Click **Generate** to save a return request file (a .xml file named after FID\_XXXXX).
6. Take the return request file to another computer connected to the internet.
7. Open the web browser and go to [www.zwsoft.com/en/license](http://www.zwsoft.com/en/license).
8. Fill in your license code.
9. Click **Submit** and you will be navigated to a page called Manage Licenses.
10. Click **Manage Licenses** on the page.
11. Click **Manual Return**.
12. Upload your return request file and click **Submit**.
13. Click **Save To File** on the coming page and save the file named responseXML.
14. Take this responseXML back to the computer with ZWCAD.
15. Go to the page you generated the return request file and click **Locate** to upload the responseXML.
16. Click **OK** when done. You'll see a success message.

Your ZWCAD has been deactivated successfully.

Now it's ready to be activated on the new system.

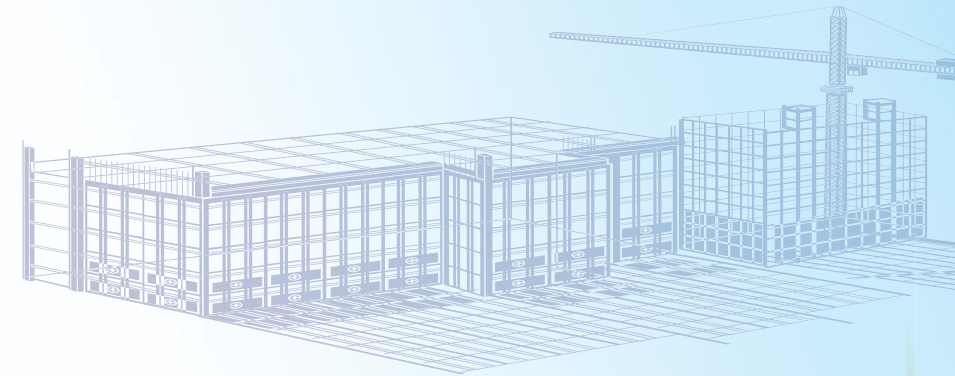


# Network



Network licensing means the clients get their licenses from a network server that is authorized with a ZWCAD license. A network license is ideal for medium to large organizations requiring many users, being more cost effective and controllable. Admin can manage licenses by allowing, limiting or reserving license seats for specific users or groups. A Network License Manager should be installed on the server and both the server and the client need to be configured to enable licensing.

If you have purchased a network license, refer to the following chapters, which will guide you through the procedure of installation, activation and configuration before you start to use ZWCAD both on the server and the clients.



## License Server

A license server authorizes clients by issuing licenses to them. The following chapters will guide you through the procedure of installation, activation, configuration and how to start.

Additionally, it's important to know how to do a Standalone License Return if you have to change the installation.